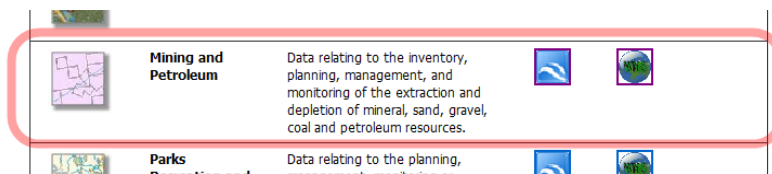

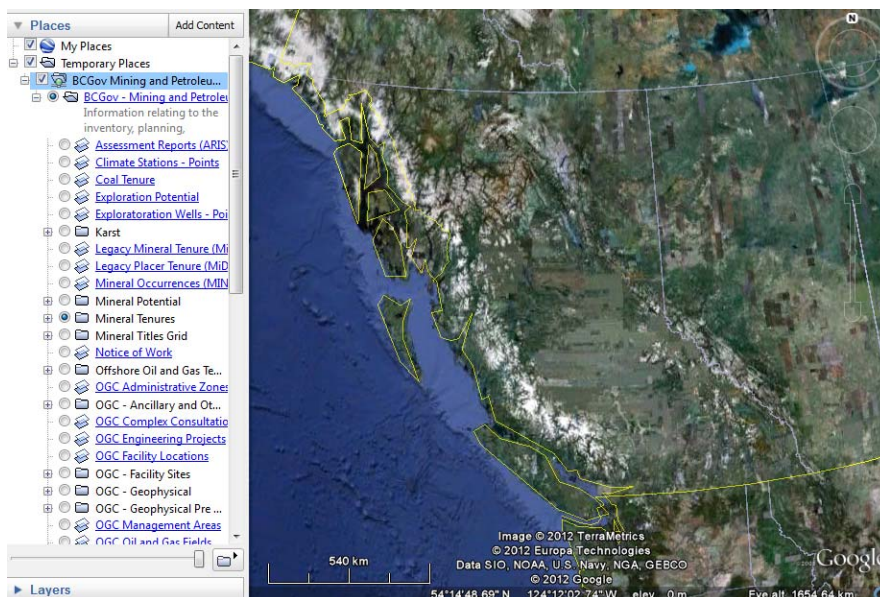


Quick Guide: Using Google Earth to View Mineral Titles

1. Download and install Google Earth: <http://earth.google.com>
2. Go to BC Government Web Mapping Services: <http://openmaps.gov.bc.ca>
3. Scroll down the page to **Mining and Petroleum**.

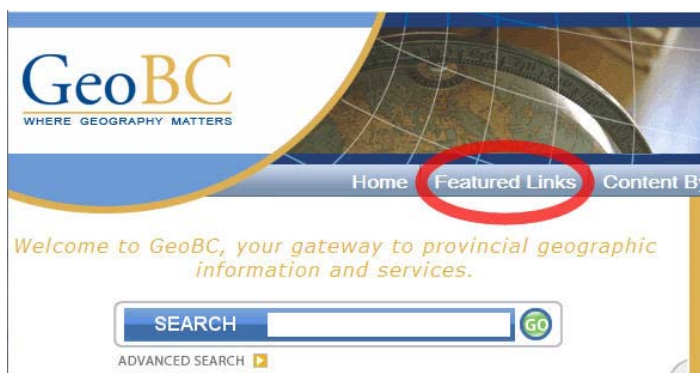


4. Click the link: **Google Earth Icon** 
5. Click **Open** in the File Download window that appears.
6. Google Earth will open and zoom into British Columbia.

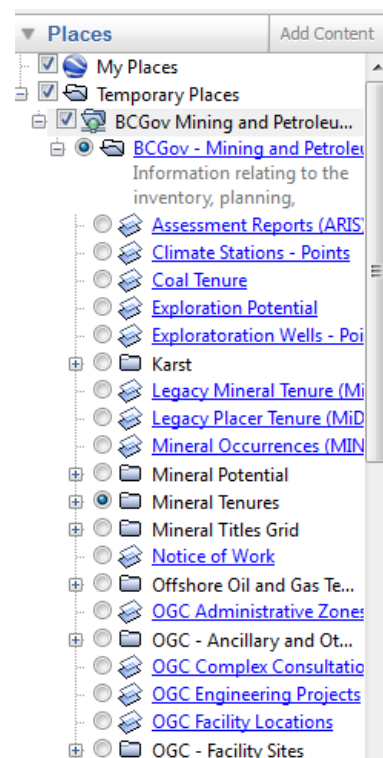


7. In Google Earth, the WMS layers are loaded into the **Places** on the sidebar under **BCGov-Mining and Petroleum WMS** →
8. Under this folder you will find layers from the Mineral Titles Branch such as: **Mineral Tenures**, **Placer Tenures**, and **Mineral Titles Grid**. Each of these folders will expand to show specific layers. Click the check box beside a layer to make it visible.

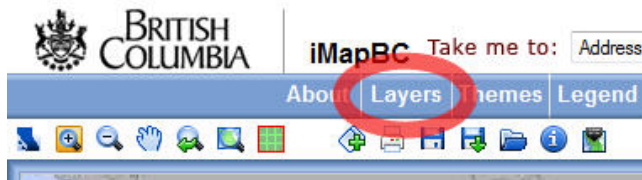
1. Go to GeoBC: <http://geobc.gov.bc.ca>
2. Click on **Featured Links**.



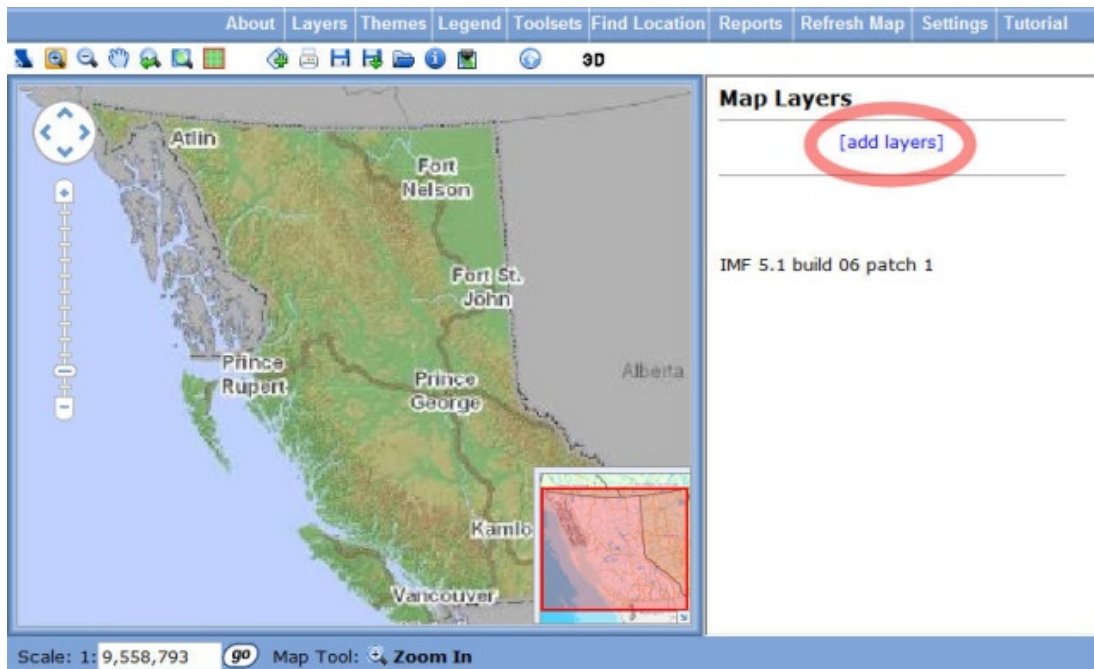
3. Click on **iMapBC (public)**.



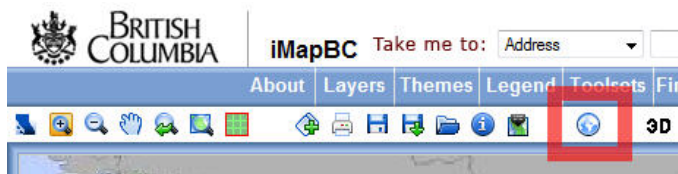
- In iMapBC click the **Layers** menu item.



- In the right hand frame, click on **[add layers]**.



- A pop up will appear. Click on the **Mining and Petroleum** folder and select **Mineral and Placer Tenures**.
- Find/Navigate to your area of interest or Title of interest.
- Click on the **External Map Visualization Tool**, and choose Google Earth as the map viewer.



- Follow steps 5 and 6, and Google Earth will zoom into the same area as in iMapBC.